

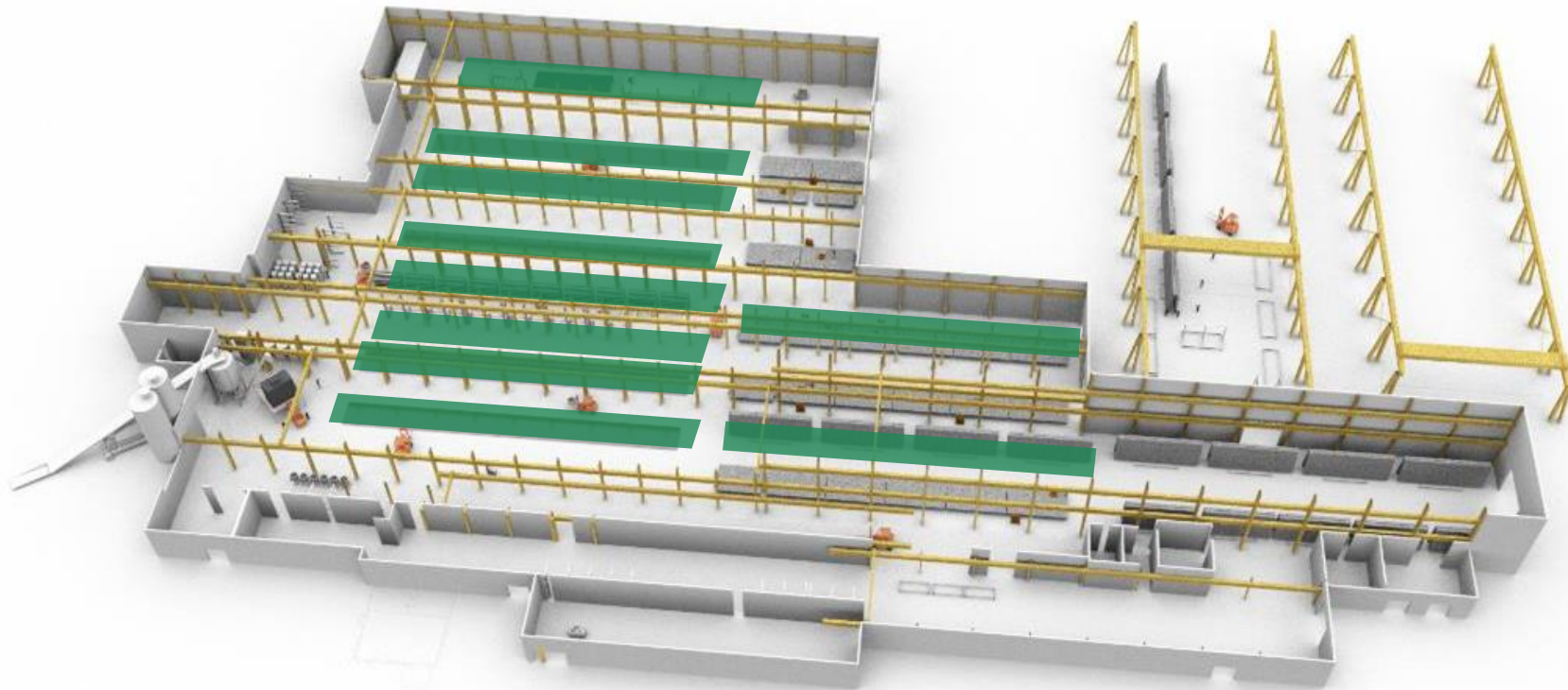


**Sustainable Solutions.  
Unlimited Options.  
Innovative Design.**



# OUR HAZLETON MANUFACTURING FACILITY

# World-Class Hazleton, PA Production Facility



---

PRODUCTION LINES	10
SQ FT PER LINE PER DAY	2,362
SQ FT PER DAY	24,000
DAYS PER WEEK	5
SQ FT PER WEEK	118,100
WEEKS PER YEAR	50
MAX ANNUAL SQ FT	6,000,000

# A Facility Built for You



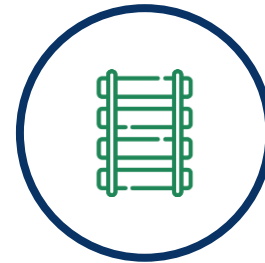
10 production lines meet any schedule, volume, and production.



Pennsylvania-skilled labor delivers quality-controlled craftsmanship



National delivery capabilities with facility accessible to 33% of U.S. GDP within 3-hour drive.



Rail and surface access assures delivery deadlines.



Year-round climate-controlled manufacturing to deliver any spec.



Fully tested, engineered, and code compliant

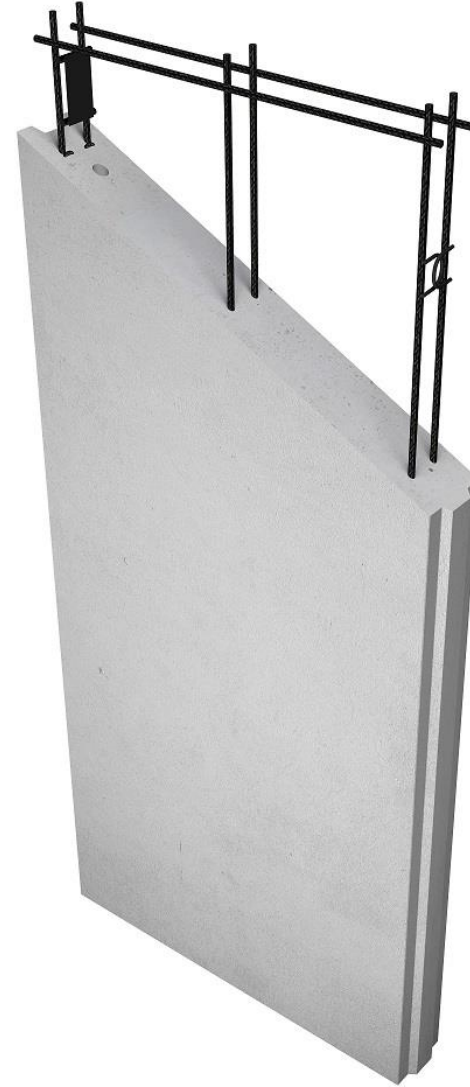
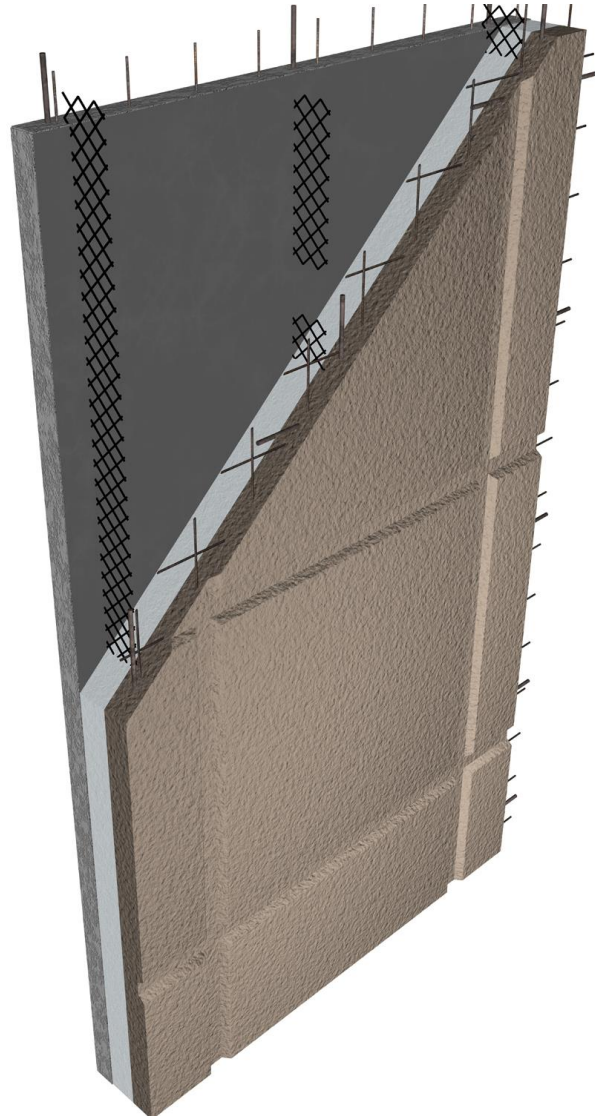
# Why **Exceler**

We deliver **high-quality, sustainable** building systems.

- Precast Structural Panels
- Cladding Panels
- Complete Building Systems



# Product



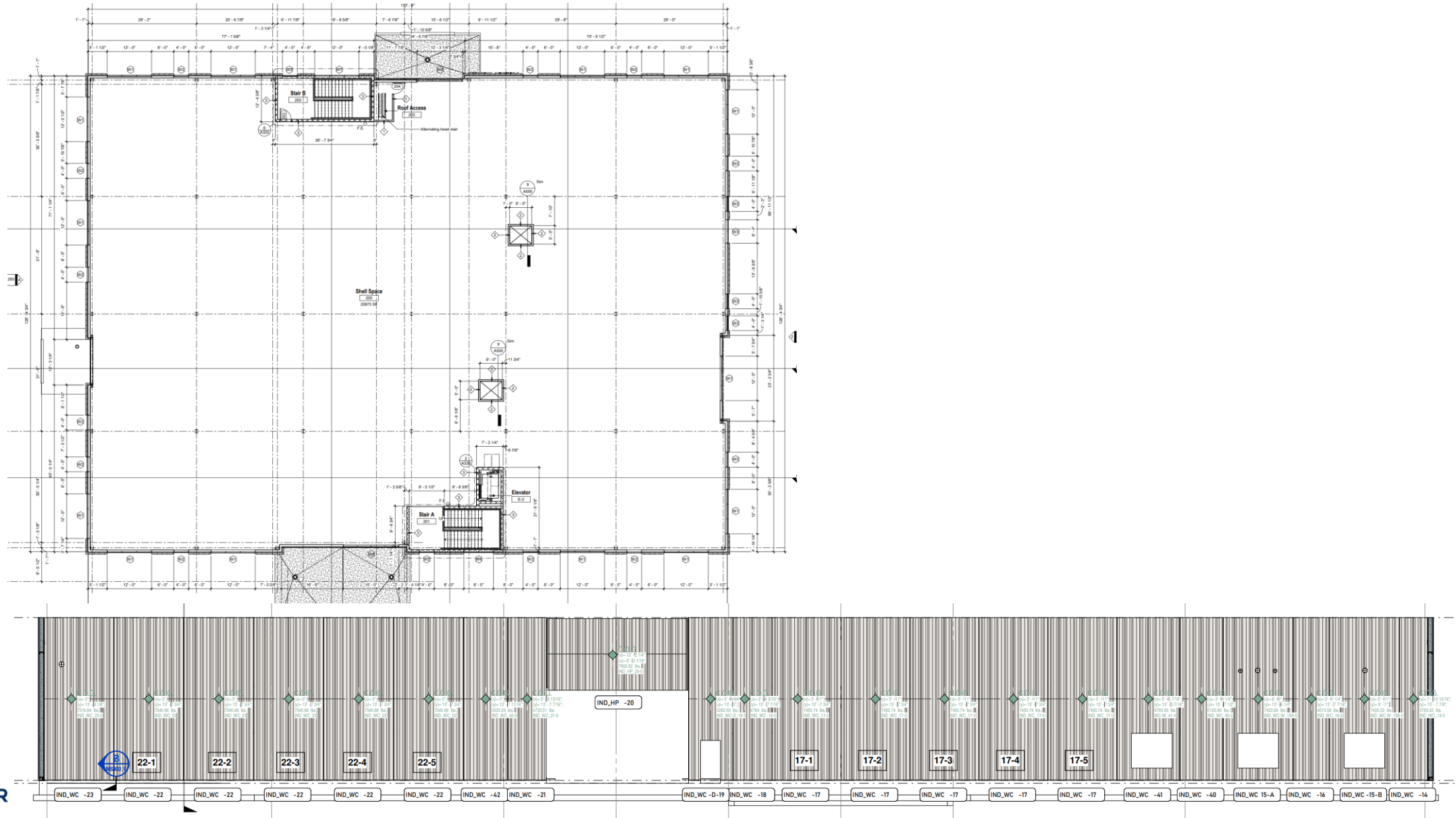






# Process

# Step 1: Receive Plans From Client



# Step 2: Review Plans and Bid Process

- Our engineering team will bid the job based on plans received
- Exceler team will review proposal/plans with client
- Make changes if needed
- Client signs off on final plans/pricing
- Client signs contract

# Step 3: Production, Delivery, and Assembly

- Exceler creates shop and production drawings
- Exceler/client review shop and production drawings/sign off
- Exceler puts project into production schedule
- Product is produced and shipped to client's sight for assembly

# Step 4: Completed Building





**Fire, Water, Impact, Wind,  
Mold, and Weather-Resistant**



# Finish Options

Colors, Textures, and Finishes

# Finish Options

## Texture Series/Stone Series



**FINESSE**



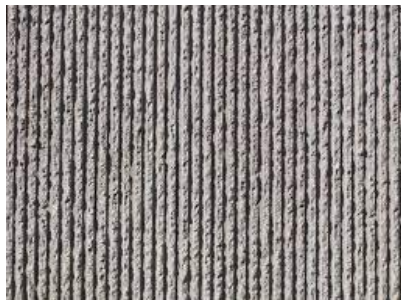
**FREESTYLE**



**QUARZPUTZ**



**AMERISTONE**



**ARCHITECTUAL**



**RIVER ROCK**



**RIVER ROCK  
POLISHED**



**BRICK**



# Final Thoughts: Why Exceler

- Shorter construction timeline
- Year-round production
- Not subject to whether conditions
- Controlled manufacturing environment



# Questions?