

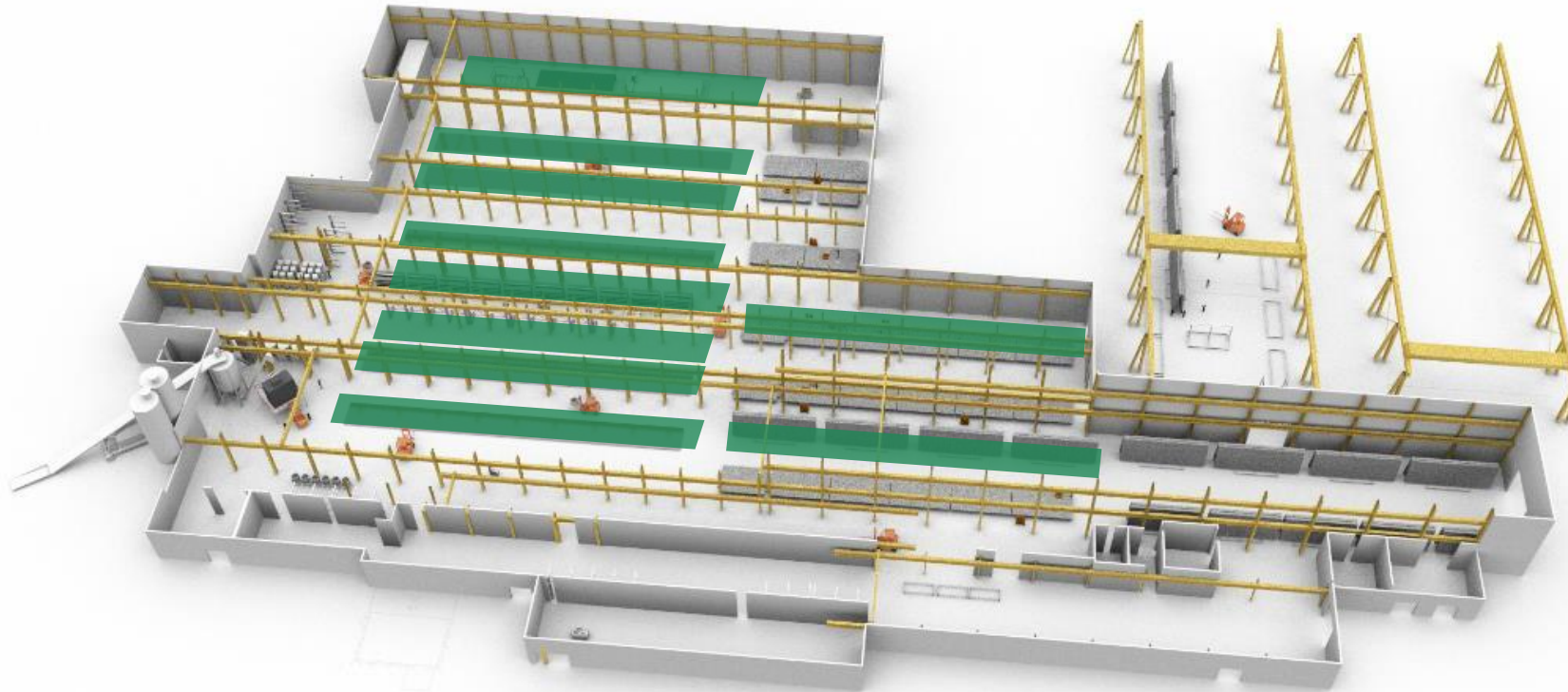


**Sustainable Solutions.
Unlimited Options.
Innovative Design.**



OUR HAZLETON MANUFACTURING FACILITY

World-Class Hazleton, PA Production Facility



PRODUCTION LINES	10
SQ FT PER LINE PER DAY	2,362
SQ FT PER DAY	23,620
DAYS PER WEEK	5
SQ FT PER WEEK	118,100
WEEKS PER YEAR	50
MAX ANNUAL SQ FT	5,905,000

A Facility Built for You



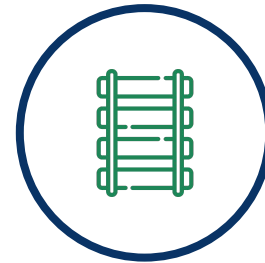
10 production lines meet any schedule, volume, and production.



Pennsylvania-skilled labor delivers quality-controlled craftsmanship



National delivery capabilities with facility accessible to 33% of U.S. GDP within 3-hour drive.



Rail and surface access assures delivery deadlines.



Year-round climate-controlled manufacturing to deliver any spec.



Fully tested, engineered, and code compliant

Why **Exceler**

We deliver **high-quality, lightweight, sustainable** building systems.

- Cladding Panels
- Structural Panels
- Complete Building Systems



Premier Product Partner

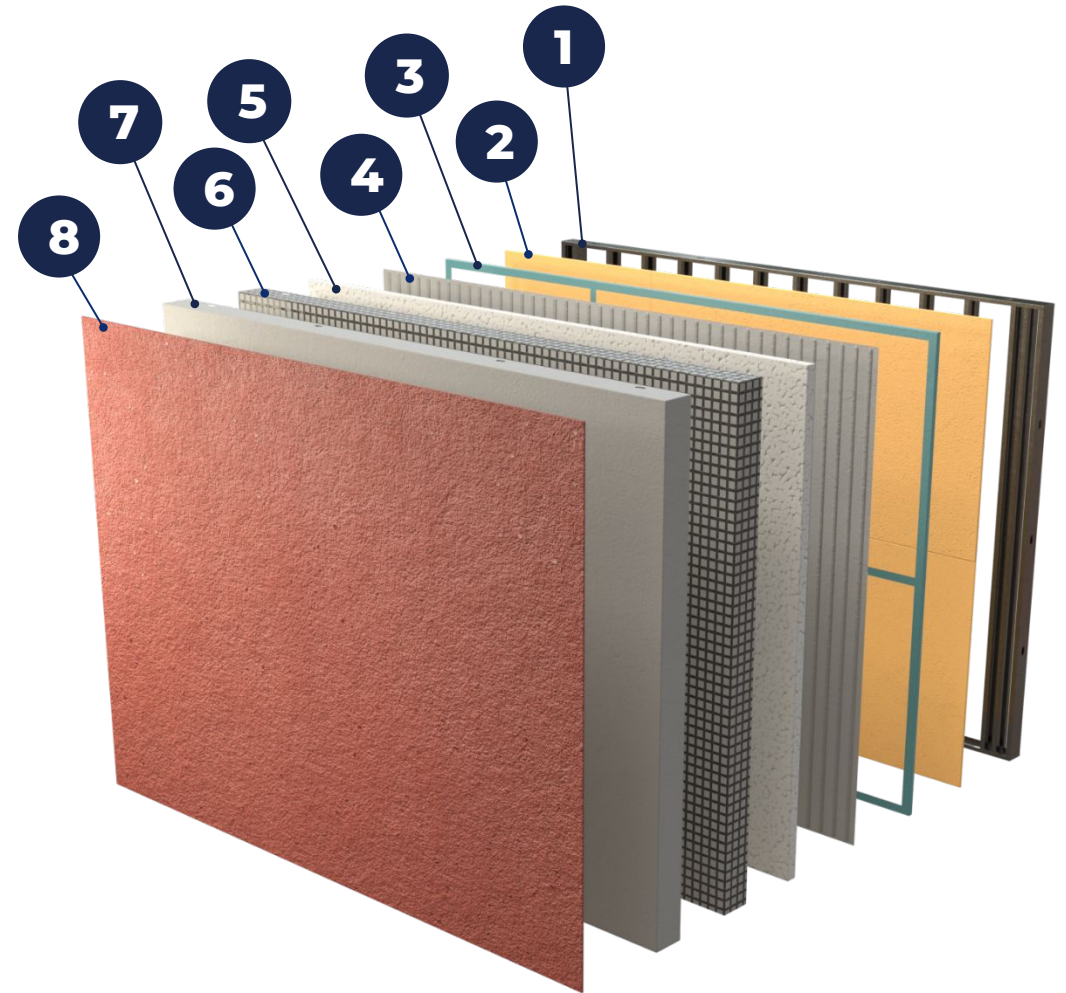


- **Over 50 years** of industry experience
- **40+ years** of research and development in product technology
- **Industry leader** in Exterior Insulation and Finish Systems (EIFS)
- **Over 500,000** projects completed
- **ISO certified** in U.S. and Canadian markets
- **Over 4,000** installers nationwide

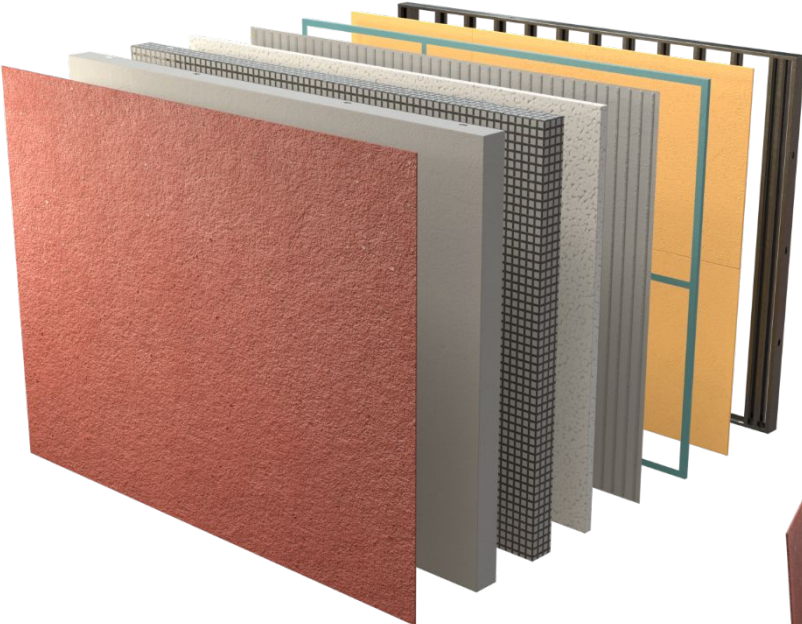


Our Product

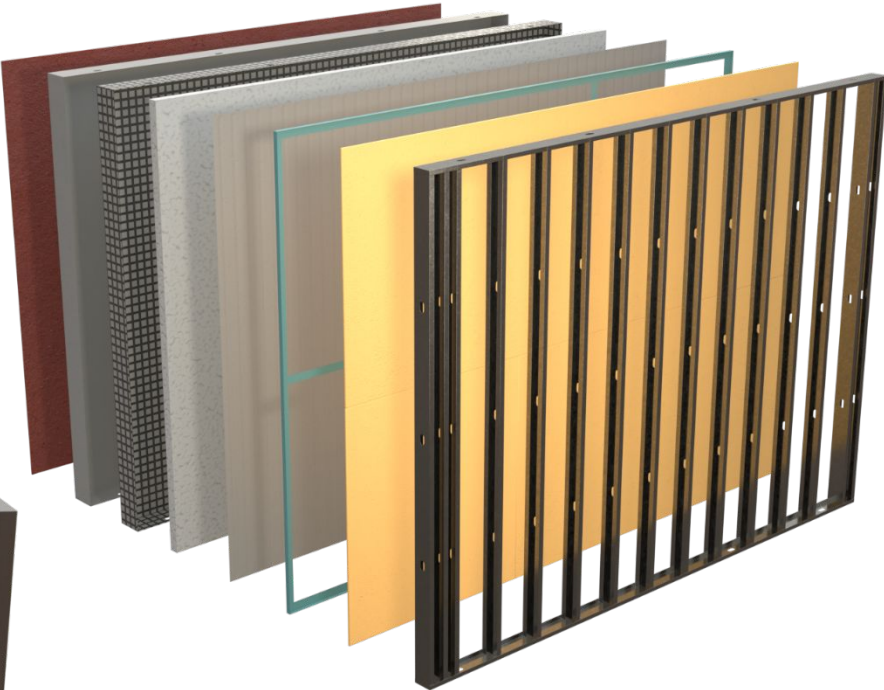
1. **Steel Frame:** Cold form steel studs. 20-14 gauge. Structurally tailored to region
2. **Sheathing:** 4' x 8' sheets. Significantly improves fire rating. Provides structure for the subsequent layers.
+Vapor Barrier: Nonporous and moisture resistant coating. Prevents water damage to previous layers.
3. **Sealant:** Thin coat over breaks and holes in vapor barrier (2). Water-tight seal prevents damage to sheathing (2) and frame (1).
4. **Adhesive Spacing Layer:** Thin layer of cementitious base coat. Troweled adhesive beads allow for spacing and adhesion between base coat and EPS foam (5).
5. **EPS Foam:** Thermal insulation. Lightweight, strong, affordable, energy efficient. Resistant to mold. Long-lasting R-value.
6. **Embedded Mesh Layer:** High-durability mesh embedded in a base coat layer. Covers face and outer edges of panel. Adds structural strength and locks previous layers together.
7. **Base Coat:** Outer finish underlayment that fully embeds mesh (6). Acts as reveal material or adhesive for finishes (8).
8. **Finish:** Large catalog of textures, patterns, and colors. Matte, semigloss, glossy, and metallic lusters. Custom finishes possible.



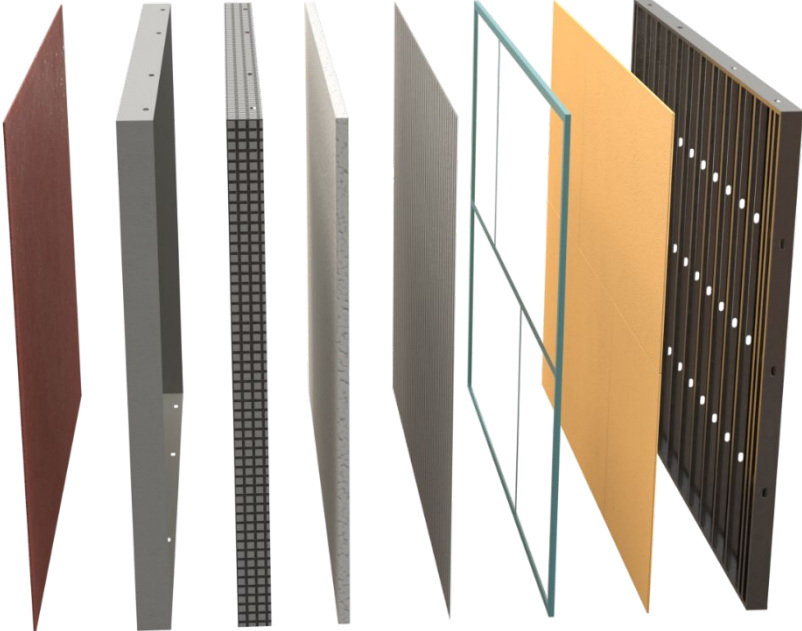
Front View



Back View

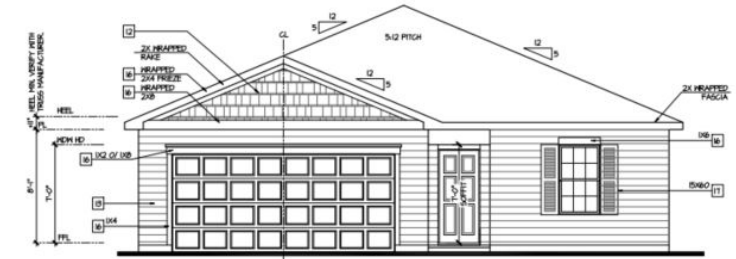
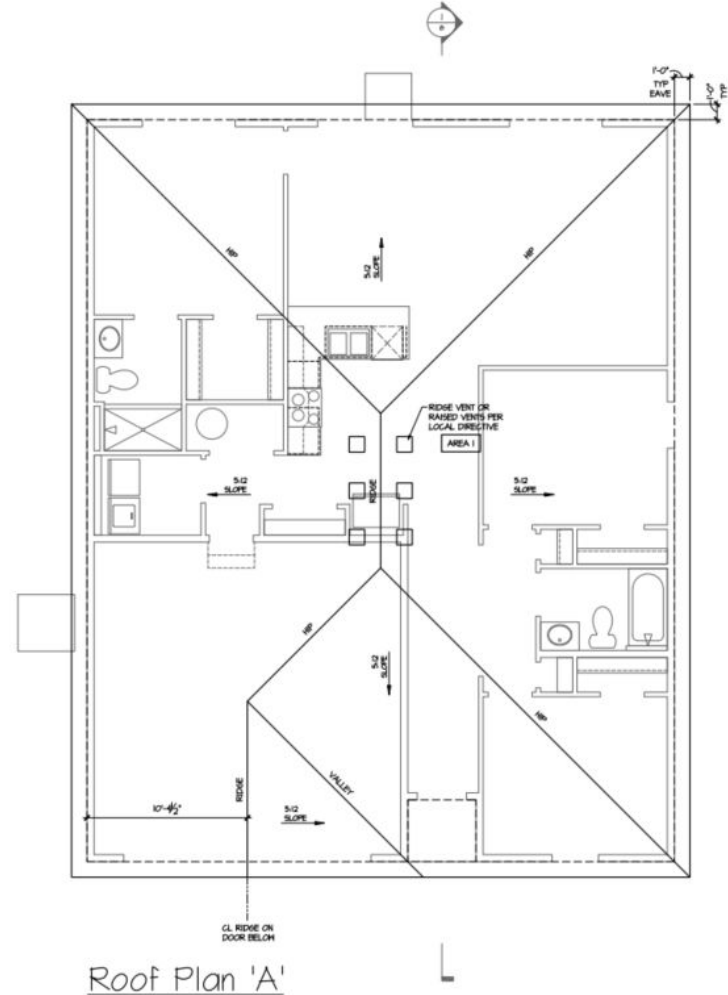
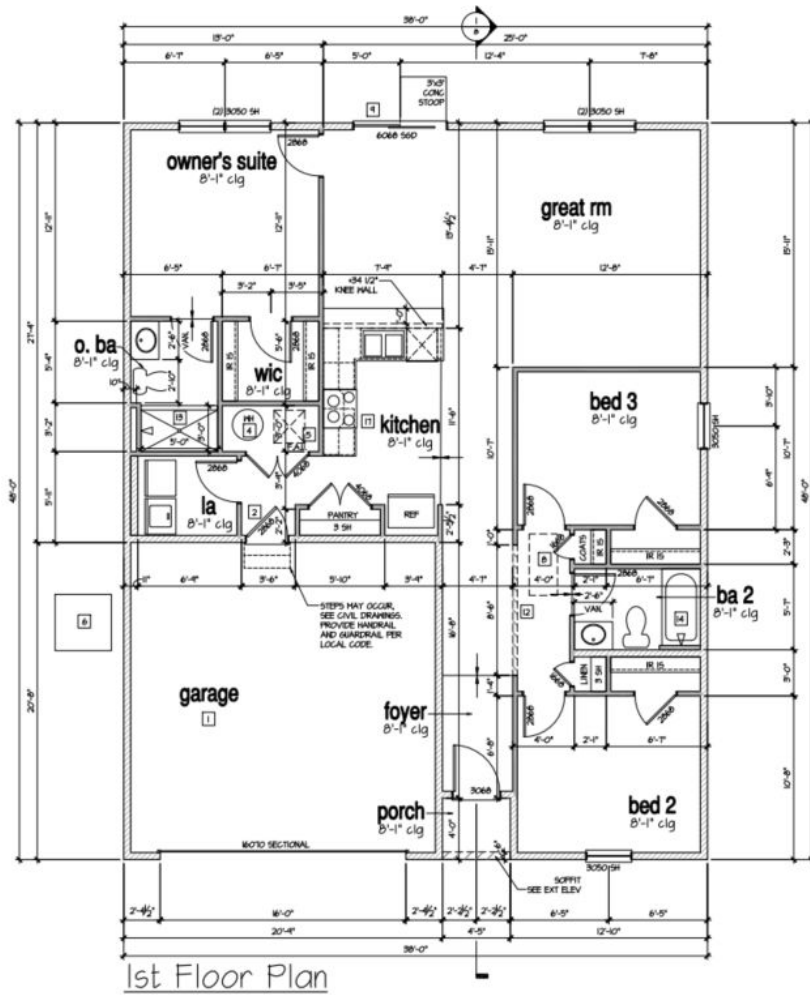


Side View

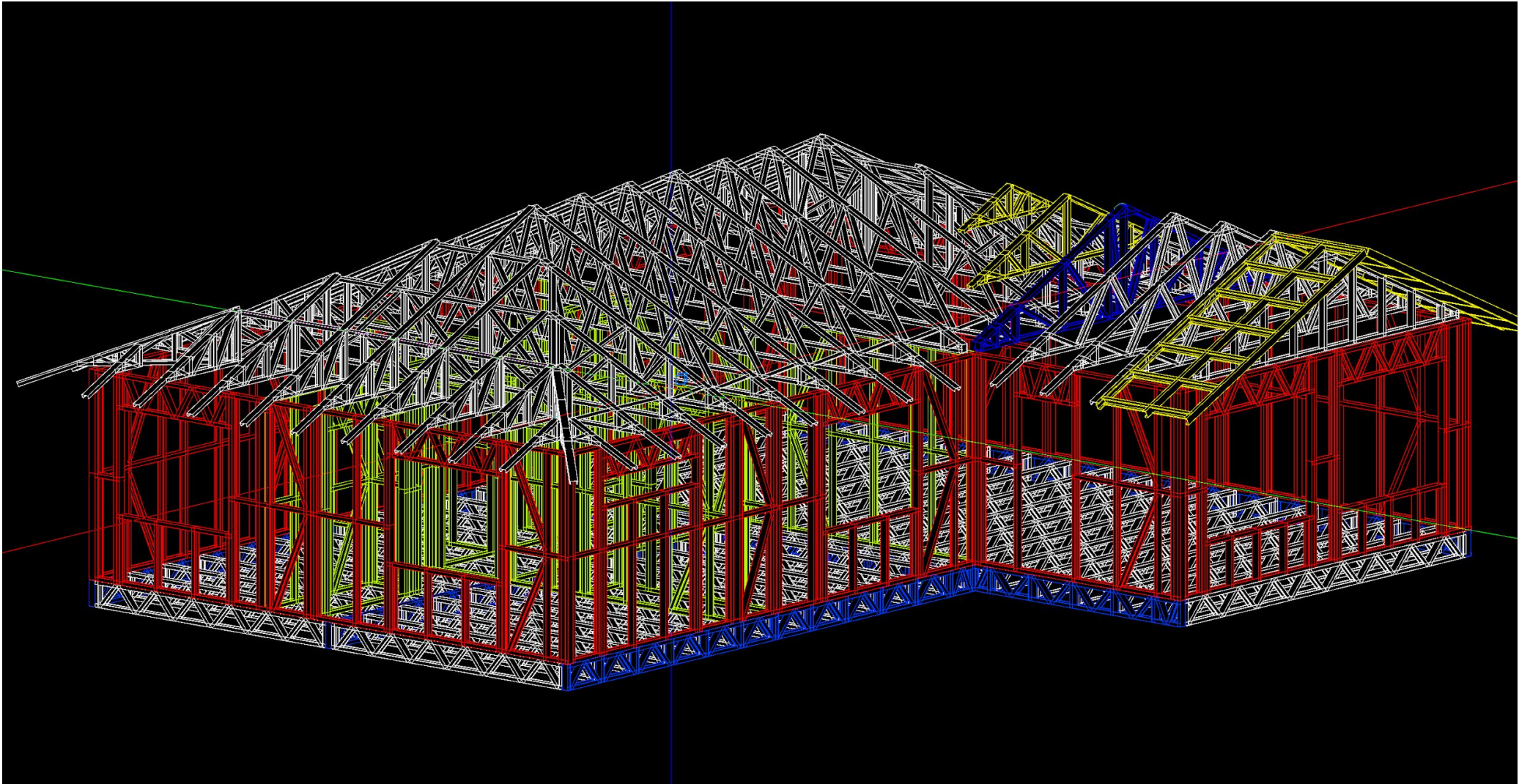


Residential Process Example

Receive Plans From Client



Re-engineer Into Panelized System

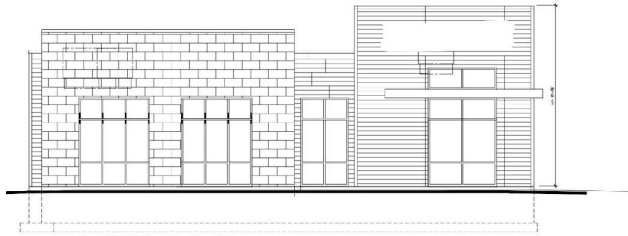


Finished Product

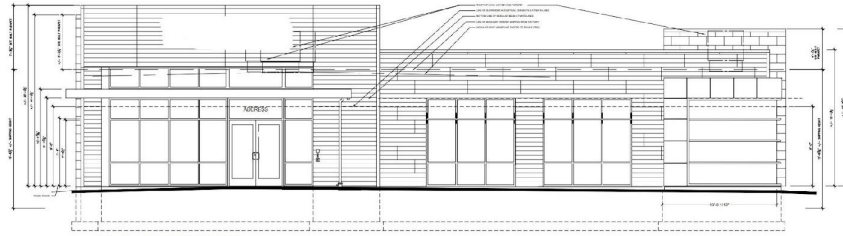


Commercial Process Example

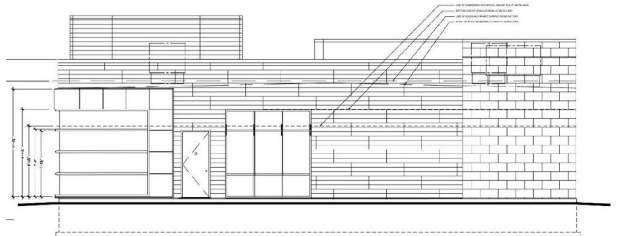
Receive Plans



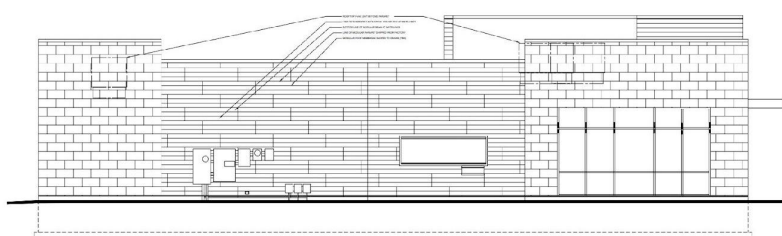
2 LEFT SIDE ELEVATION
3/16"=1'-0"



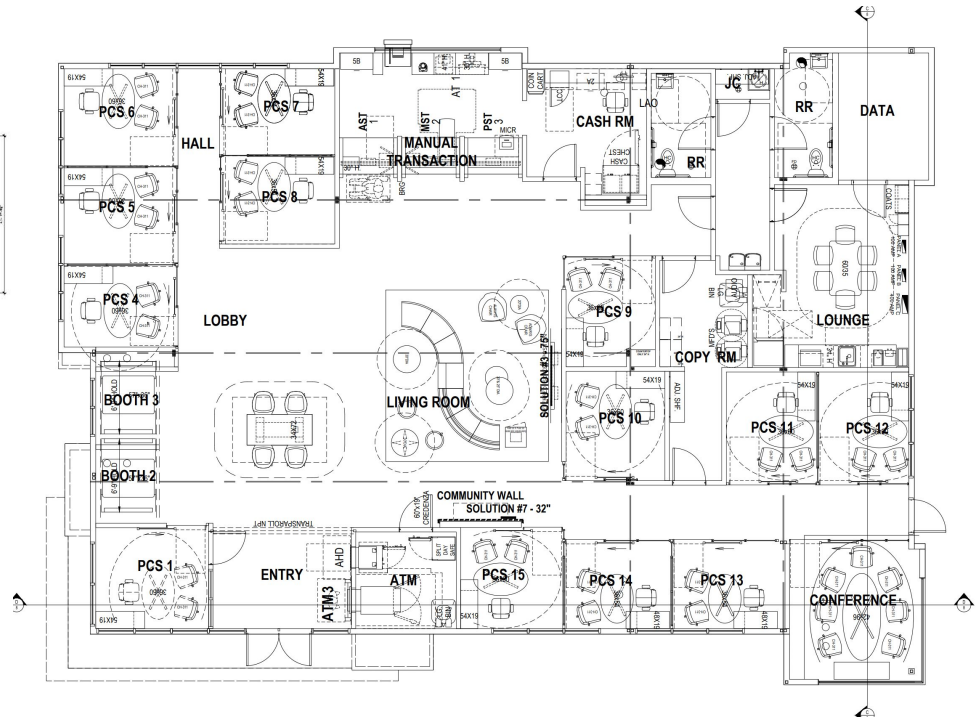
1 FRONT ELEVATION
3/16"=1'-0"



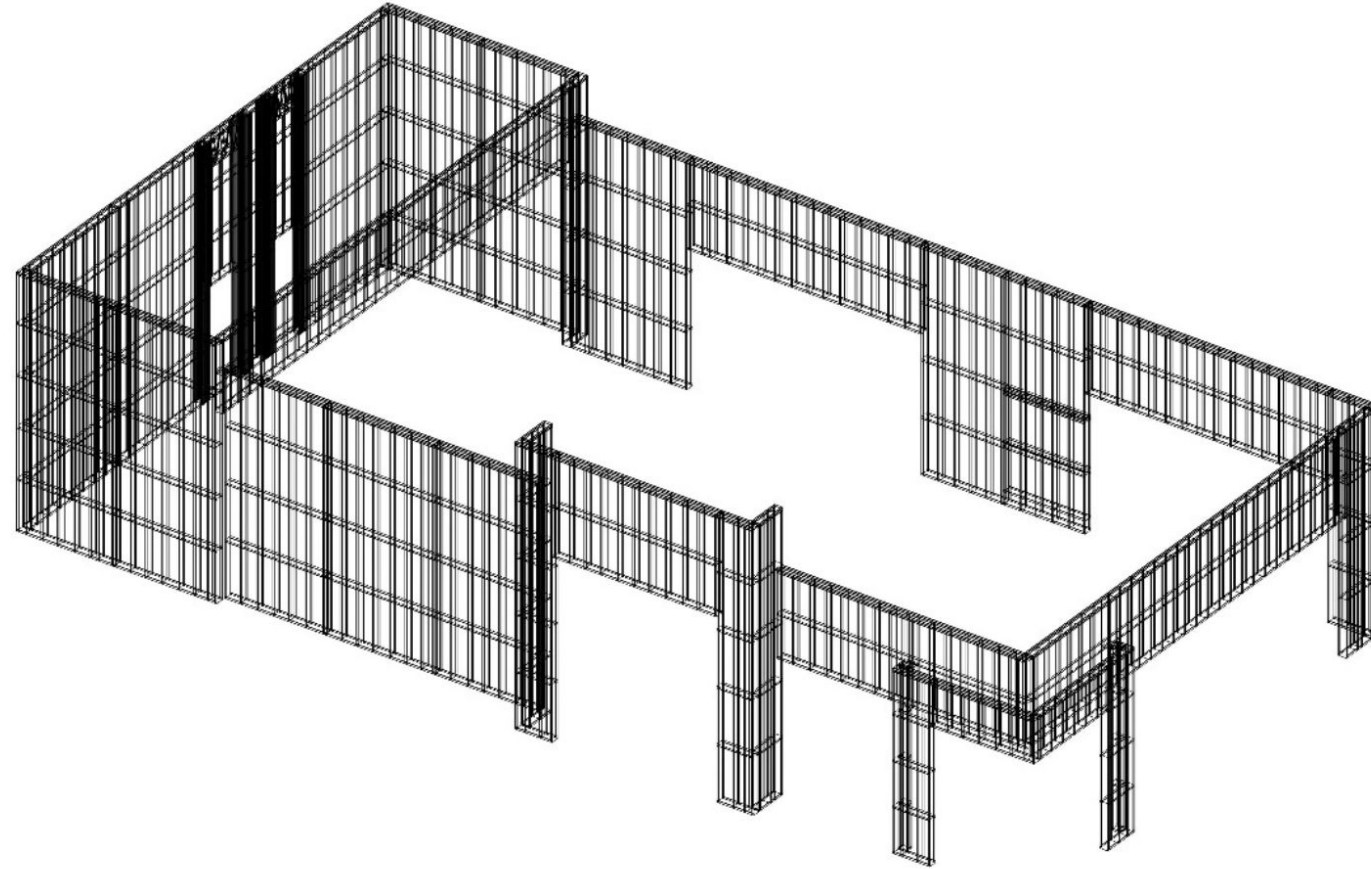
3 RIGHT SIDE ELEVATION
3/16"=1'-0"



4 REAR ELEVATION
3/16"=1'-0"



Commercial Structural Design: Same Process



Finished Product



Panel Installation

Structural Insulated Systems



Cladding Insulated Systems

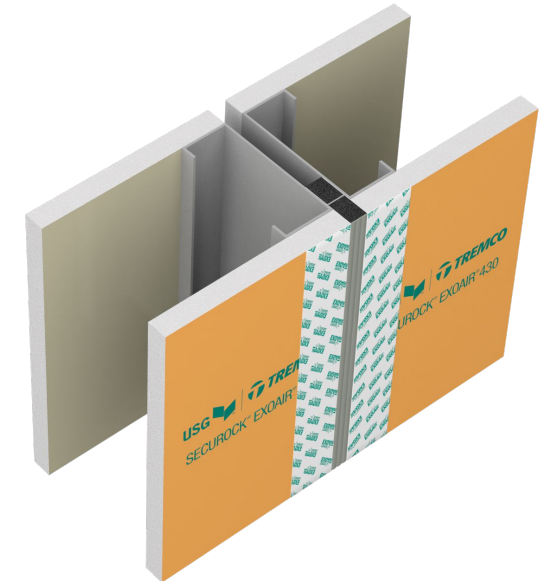
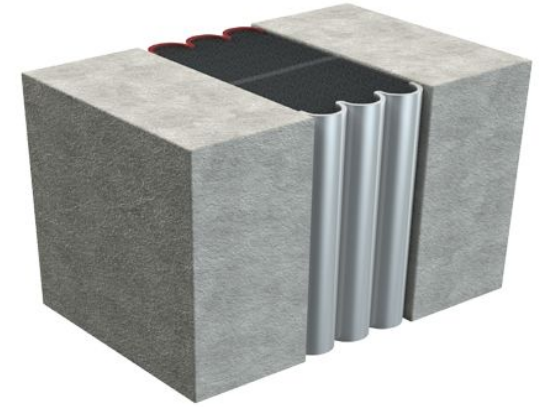


Willseal

PF100 & PF200

Willseal Description: Willseal is a high-density polyurethane foam that is impregnated with flame retardant, UV stable acrylic resin, and an integral silicone seal barrier, which is protected by the foam core

- **Sealant System:** Pre-Compressed water and air-tight foam sealant system for prefabricated applications
- **Primary Use:** Willseal is meant to be used as the primary external seal in panelized construction
- **Durable:** Willseal will not degrade, nor corrode with any typical construction products
- **Sustainable:** Willseal meets or exceeds requirements for IBC testing. Comprised of Low-Emitting Materials – Adhesives and Sealants (LEED Credit 4.1)
- **Color Match:** Willseal PF 200 allows us to color match exterior “beauty bead” caulk detail to your exterior finish



Our Panel Benefits



Faster Construction Time

Faster ROI on new construction and compressed revenue interruption on renovation.



Stronger, More Durable

Designed for maximum durability surpassing competing systems.



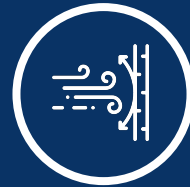
Lower Cost

Range of solutions fits any budget while reducing cost of ownership, operation and maintenance.



Unlimited Design Options

Any color and finish to meet your building aesthetic.



Impervious and Weather-Resilient

To protect from the elements and maximize performance.



Energy-Efficient

Optimal energy, insulation and thermal performance.



Sustainable

Meeting Net Zero, Passive House and other green building standards. 90% less construction waste.



One Point of Contact

Backed by industry-leading system warranties available through a single point of contact.

State-of-the-Art Testing Facility

Available to partner fabricators; consulting, engineering and architectural firms; building management companies; building owners; and building science institutions.

Types of testing:

- **Research & Development** – Evaluation of products and systems
- **Project-Specific** – Validate feasibility of project- specific design and establish ideal sequence of installation and QA/ QC protocol for the job site.
- **Full Wall Assembly** – Wall components from façade to interior sheathing tested together as a complete system for air and water resistance.
- **Critical Details** – Evaluation of critical connection points between air/vapor building protection systems, facade anchors, roof-to-wall tie ins, foundation-to-wall tie-ins, corners, window-to-wall interfaces, penetrations and dynamic joint testing.



Verified 3rd Party Testing

Accredited third-party test facility with additional lab testing available

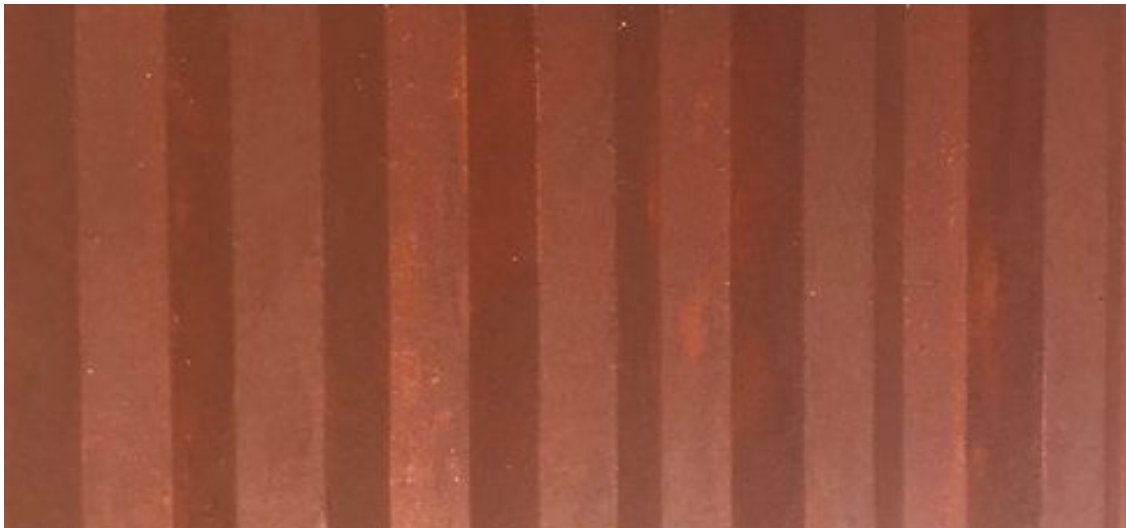
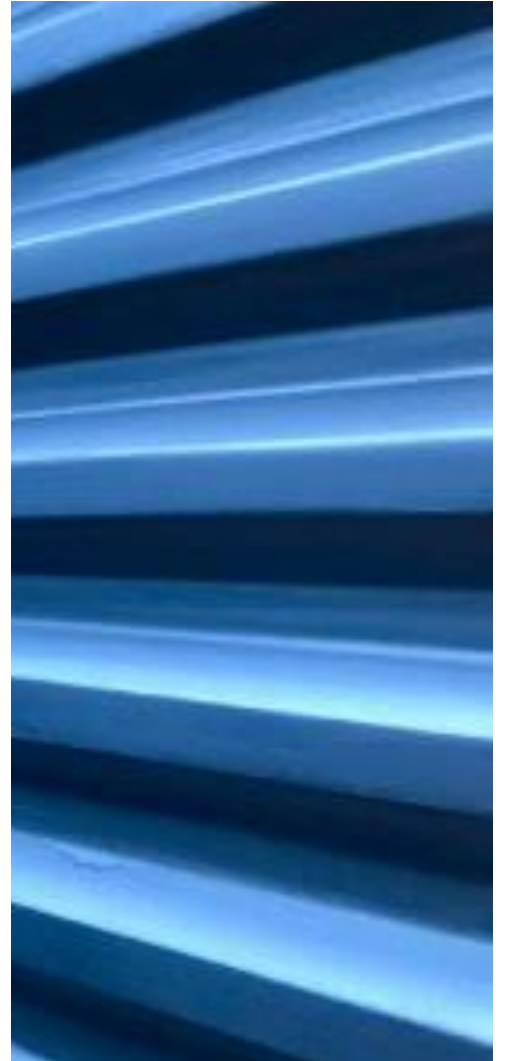
- **ASTM E72*** Strength test of panels for building construction
- **ASTM E283** Air infiltration
- **ASTM E330** Uniform load deflection/Uniform load structural
- **ASTM E331** Uniform static pressure-resistance to driving rain
- **ASTM E547** Cyclic static pressure-resistance to driving rain
- **ASTM E2357** Air leakage of air barrier assemblies
- **AAMA 101** All testing specified for aluminum, (NAFS) PVC and wood windows and glass doors
- **IBC 1403.2** Weather protection





Unlimited Design Options

Colors, Textures, and Finishes



Finish Options

Texture Series/Stone Series



FINESSE



FREESTYLE



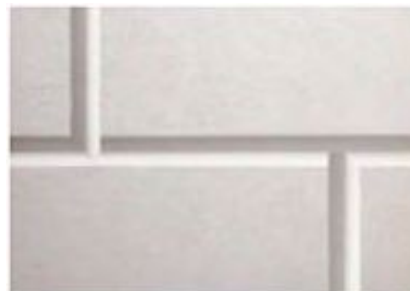
QUARZPUTZ



AMERISTONE



SANDPEBBLE



LYMESTONE



TERRANEO



TIBUR STONE

Finish Options

Wood and Metal Series



REFLECTIT SMOOTH AND TEXTURED



FERROS TROWELED AND DRIP EFFECT



WOOD GRAIN

Finish Options

Masonry Series



Custom Brick



New Brick

Final Thoughts: Why Exceler

- Speed construction or restoration
- Simplify installation
- Extend the construction season
- A single-source building envelope
- More sustainable structures
- Comfortable occupants
- Satisfied contractors
- Improved owner ROI



Questions?